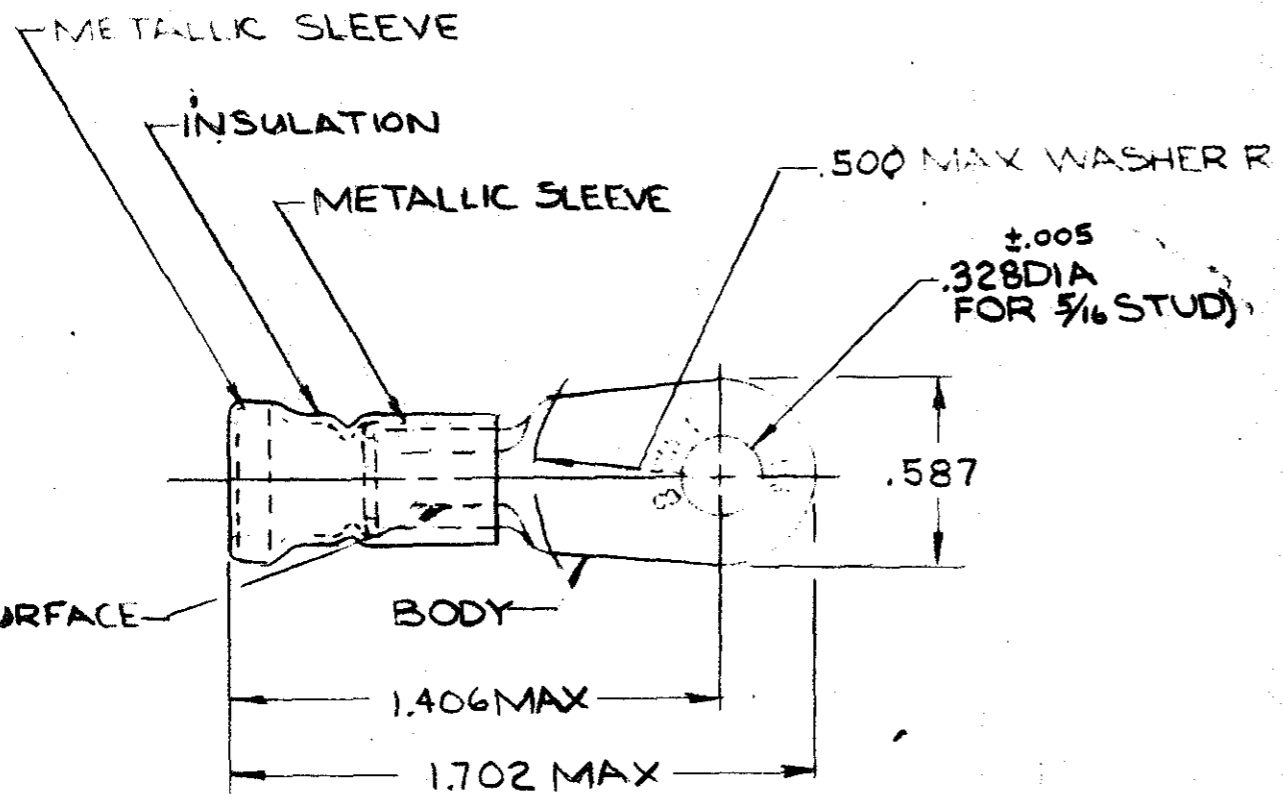


© 1953 BY AMP INCORPORATED. ALL RIGHTS RESERVED. AMP PRODUCTS COVERED BY PATENTS AND OR PATENTS PENDING.

LOC		REVISIONS			
ZONE	LTR	DESCRIPTION	DATE	APPROVED	
G		REDRAWN & REVISED PG-5563	1-6-70	J.M.	
	H	REV. PER ECN P-7000	10/23/70	J.M.	
	J	REV. PER P-8347	9/6/79	J.M.	
	K	OBSOLETE 2-1 P-9222	3-1-82	J.M.	
	L	OBSOLETE 2-2 G-2881	3/8/88	J.M.	
	M	REV PER G-4680	7/2/88	J.M.	



TONGUE MATERIAL THICKNESS = .040 ±.003
 FOR .298 MAX WIRE INS DIA

TABLE I

1	WIRE TERMINAL	322003	BODY: COPPER (QQ-C-576) FINISH: (SEE TABLE II) INSULATION: PVC COLOR: RED METALLIC SLEEVE: COPPER (QQ-C-576) METALLIC BAND: STEEL QQ-S-698 (ASTM A109)	
	QTY	DESCRIPTION	PART NO.	
	UNLESS OTHERWISE SPECIFIED DIMENSIONS ARE IN INCHES. TOLERANCES ON: DECIMALS ±.008 ANGLES 1°		CONTRACT NO.	AMP INCORPORATED HARRISBURG, PENNSYLVANIA
	MATERIAL		DR. J. Kaut 11-14-69 CHK. M. E. Enomoto 1-6-70 APPD. Swahel 1-7-70 REL. M. Enomoto 1-8-70	NAME: WIRE TERMINAL AMPLI-BOND-RING TONGUE WIRE SIZE: 8
SEE TABLE I		DSGN APPD.	OTHER APPD.	
		SIZE B	CODE IDENT NO. 00779	
		SCALE NTS.	NUMBER 322003	
			SHEET 1 OF 1	

TABLE II

2-322003-1	GOLD PL (MIL-G-45204) TYPE II 00005 MIN EXT THK OVER NICKEL PL (QQ-N-290) 00003 MIN EXT THK.		OBSOLETE
322003	TIN PL (MIL-T-10727)	2-322003-2	OBSOLETE
PART NO.	FINISH	PART No. ON TAPE	

CUSTOMER DRAWING